



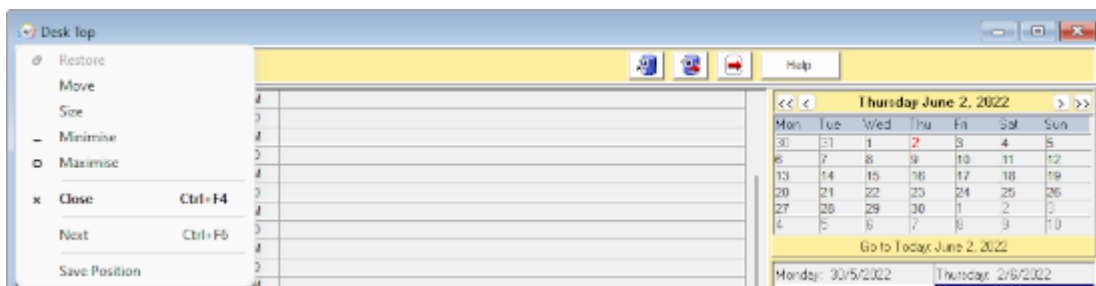
Form Position Saving

IQX has a facility from version 2.2.9.14 onwards where a form will remember a fixed position to open at, rather than move cascade positioning down the screen.

It has to be switched on in General Settings, then activated and finally the forms set.

To activate click on the IQX symbol on the left hand of the header bar of any form, and click on Save Position. Then exit and restart IQX.

The position will not have been remembered yet but the system is activated.



When IQX has restarted open a form and move it to the desired position e.g. The Desk Top to the right of the screen to make it easy to drag from Inbox onto a record.

Click the symbol again and Save Position.

Now if you close and reopen the screen it will be in the saved position and size.

This especially useful where you interact between screens such as dragging from Inbox or Timesheet Image linking.

User Modified Columns

From version 2.17.12 onwards users can now modify the display of columns they see in most views in IQX. Columns can be moved, and their positions saved.

Right clicking on a column will allow users to carry out various actions to customise their views according to their needs.



The screenshot shows the 'Select Person' window with a table of candidates. A context menu is open over the 'Alert' column header, showing options: 'Remember This Layout', 'Hide This Column - Alert', 'Default Layout', 'My Remembered Layout', and 'Show All Columns'. Below the table, two rows of data are visible: '40 Salford' and '37 Fox St'.

Selection	Name	State	Div & Skill	Last TS	Alert
Search	Isaac Baxter	Current	-		
Stored Selections	Quinn Bell	Current	International -		
Stored Searches	Danny Booth	Current	International - Food	201432	
Reports	Raphael Booth	Current	International - Food	201227	
Mailer Selections	Brian Campos	Current	International - HGV	201405	
	Woody Campos	Current	International - Food		
	Aubrey Christian	Current	International - Food	200929	
	Kenzie Clark	Current	International - 7.5		

- Remember This Layout - Stores the current layout for display until changed by the user.
- Hide this Column - Hides the selected column. To ensure this is displayed when logging back in also Select Remember This Layout.
- Default Layout - When selected the default view is visible. If a Departmental layout has been created this will appear.
- My Remembered Layout - the user will see their last Remembered Layout
- Show all Columns - If any columns have been hidden this will restore visibility of them.

Note: This feature does not work on Temp Desk yet as it is not generated the same way.

Those with Maintenance or Departmental Maintenance rights can define a DEFAULT layout for all users who have not 'Remembered' their own layout. This may be a subset of all available columns. They can also save and remove named layouts.

The screenshot shows the 'Select Person' window with a table of candidates. A context menu is open over the 'Alert' column header, showing options: 'Remember This Layout', 'Hide This Column - Alert', 'Default Layout', 'My Remembered Layout', 'Show All Columns', 'Save Default Layout for Construction', 'Save Named Layout', and 'Delete Named Layout'. Below the table, two rows of data are visible: '40 Salford' and '37 Fox St'.

Selection	Name	State	Div & Skill	Last TS	Alert
Search	Sana Acevedo	Perm Placed	Infrastructure - Foo	201434	
Stored Selections	Jack Adams	Pre registr...	Corporate -		
Stored Searches	Marcel Adams	Current	Corporate - Midwife		
Reports	Adam Adkins	Pre registr...	Corporate -		
Mail Merge	Tomas Aguirre	Current	Support - Food	200931	
Bulk CV Import	Patryk Alexander	Current	Infrastructure - HGV	200930	
Mailer Selections	Penelope Alexander	Current	Infrastructure - Bri	201648	
	Shane Allen	Current	Infrastructure - HGV	200931	
	Alyssia Alvarado	Current	Infrastructure - FLT	201648	
	Betty Alvarado	Current	Infrastructure - Bar		

These are:

- Save Default Layout for Users Default department - Saves the designed layout as a default for the User's department.
- Save Named Layout - Allows the User to create different column layouts for different purposes. These will be seen by all other users in the department.
- Delete Named Layout - Allows the User to delete their named layout.



Go back to [Hints, Tips & Shortcuts](#)

From:

<https://iqxusers.co.uk/iqxhelp/> - **iqx**

Permanent link:

https://iqxusers.co.uk/iqxhelp/doku.php?id=3_form_position_saving

Last update: **2023/02/02 17:29**

